

CONTROL PANEL



1. TEMPERATURE CONTROL

temperature range from 37°C to 130°C

2. REVERSE - TURBO - MULTI-PULSE

REVERSE - gentil reverse stirring with the blunt blade edge

TURBO - max speed for extra smooth results

MULTI-PULSE - various interval speed operations

3. TIMER

timing control as desired

4. SPEED

10 speed settings - from easy stirring or chopping or high-speed blending

5. PAUSE

taste or check the consistency etc.

without re-setting. All the current settings are kept

Order spare parts at shop.heinzelmannpro.com

Insert Bowl



Place the bowl into the holder of machine



Press the blender bowl slightly downward until the blade assembly locks in place

Blade Assembly



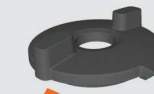
LOCK

UNLOCK

Seal Assembly

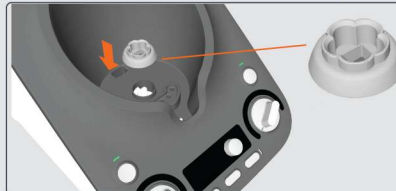


Blade Seal

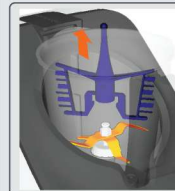


Lid Seal

Clutch Assembly



Whisk Operation



Remove the whisk for speed 5 or above

Dishwasher Safe



Don't put any object inside the bowl when machine is in operation



Don't put the machine into water



Don't remove the cap when in high temperature or TURBO



Don't put your hands inside the bowl when machine is in operation



Don't touch the sharp blade directly



Unplug before cleaning

